



REQUEST FOR QUOTATION

The Town of Blind River is accepting quotations for the creation of two pavilion-style shelters.

The Town of Blind River is seeking quotations that includes costing for equipment and labour required to construct 2 pavilion-style shelters in order to provide coverage for Blind River's former Mill Yard artefacts. The project must be completed between October 6, 2025-June 1, 2026.

Structure drawings are attached to this cover page.

Please note, slabs are already in place at the site.

Please drop off your sealed quotation at Town Hall (11 Hudson Street) no later than 2:00 p.m. on Friday September 26th, 2025, clearly marked **"Artefact Pavilion Project"**.

Quotations by email will be accepted, email info@blindriver.ca with the title **"Artefact Pavilion Project"**. Email quotations must be received no later than 2:00 p.m. Friday September 26th, 2025.

Bids will be opened at 2:05p.m. on Friday September 26th, 2025.

Any questions can be directed to info@blindriver.ca with the subject line **"Artefact Pavilion Project"**.

We thank those for submissions; however, the Town reserves the right to accept or reject the lowest or any bid, and/or not proceed with the project.

TOWN OF BLIND RIVER

PAVILION COVER STRUCTURES

182 VENTURI STREET
BLIND RIVER, ONTARIO

LIST OF DRAWINGS		
DRAWING No.	DRAWING DESCRIPTION	REV.
GENERAL		
G1	GENERAL NOTES	0
		0
STRUCTURAL		
S1	PLANS	0
S2	SECTIONS	0
S3	SECTIONS AND DETAILS	0

PRELIMINARY DRAWINGS.
NOT FOR CONSTRUCTION.



CLIENT
KAREN BITTNER
DIRECTOR OF FACILITIES AND COMMUNITY SERVICES
11 HUDSON STREET
BLIND RIVER, ONTARIO
ph (705) 227-0141



PROJECT No. 25-0622-105

PRIME CONSULTANT
TULLOCH ENGINEERING INC.
MATT KIRBY
71 BLACK ROAD, UNIT #8
SAULT STE. MARIE, ON
P6B 0A3
ph (705) 949-1457
matt.kirby@tulloch.ca



1. ALL WORK SHALL CONFORM TO THE ONTARIO BUILDING CODE, LATEST EDITION, OH&S ACT AND REGULATIONS LATEST EDITIONS AS WELL AS LOCAL REGULATIONS AND BYLAWS.
2. THE CONTRACTOR SHALL BE RESPONSIBLE TO VERIFY ALL SITE CONDITIONS AND MEASUREMENTS AND REPORT ANY DISCREPANCIES OR UNSATISFACTORY CONDITIONS IMMEDIATELY TO THE ENGINEER. CONDITIONS WHICH MAY ADVERSELY AFFECT THE PROPER COMPLETION OF THE JOB MUST BE IDENTIFIED BEFORE PROCEEDING WITH THE WORK.
3. CONTRACTOR TO CHECK FOR ALL UNDERGROUND SERVICES LOCATIONS PRIOR TO EXCAVATION AND SHALL BE RESPONSIBLE FOR ANY DAMAGE TO EXISTING SERVICES.
4. STRUCTURAL DRAWINGS ARE TO BE READ IN CONJUNCTION WITH SPECIFICATIONS AND OTHER CONTRACT DOCUMENTS. DRAWINGS MUST NOT BE SCALED.
4. CONTRACTOR TO VERIFY ALL DIMENSIONS AND REPORT ANY DISCREPANCIES TO THE ENGINEER IMMEDIATELY, BEFORE PROCEEDING WITH CONSTRUCTION.
5. TYPICAL STRUCTURAL DETAILS SHOWN ON THE DRAWINGS SHALL GOVERN THE WORK. IF DETAILS ON OTHER DRAWINGS CONFLICT THE MOST STRINGENT SHALL GOVERN.
6. CONTRACTOR ASSUMES ALL RESPONSIBILITY FOR DESIGN, ERECTION AND REMOVAL OF TEMPORARY WORKS. CO-ORDINATE SUCH WORK WITH THE ARCHITECT BEFORE PROCEEDING.
6. ENGINEER MUST BE NOTIFIED OF ANY CHANGE OR DEVIATION FROM THE DRAWINGS.
7. FEATURES OF CONSTRUCTION NOT FULLY SHOWN ARE OF SAME CHARACTER AS THOSE NOTED FOR SIMILAR CONDITIONS.

1. THE STRUCTURE DESCRIBED ON THE STRUCTURAL DRAWINGS HAS BEEN DESIGNED TO COMPLY WITH THE REQUIREMENTS OF THE NATIONAL BUILDING CODE 2015
2. THE APPLICABLE CLIMATIC DATA USED FOR THIS BUILDING LOCATED IN ECHO BAY, ONTARIO ARE AS FOLLOWS:
 - GROUND SNOW LOAD _____ $S_s = 3.1 \text{ kPa}$
(1 in 50 PROBABILITY OF EXCEEDENCE)
 - ASSOCIATED RAIN LOAD _____ $S_r = 0.4 \text{ kPa}$
 - IMPORTANCE FACTOR FOR WIND LOAD _____ $I_w = 0.8$
 - IMPORTANCE FACTOR FOR SNOW LOAD _____ $I_s = 0.8$
 - BASIC ROOF SNOW LOAD FACTOR _____ $C_b = 0.8$
 - HOURLY WIND PRESSURE 1/50 _____ $q = 0.44 \text{ kPa}$
3. REMAINING FACTORS BASED UPON NBC 2015 STRUCTURAL COMMENTARIES TO PART 4.

1. ALL JOIST HANGERS, COLUMN/POST BRACKETS, ETC. AS NOTED ON DRAWINGS SHALL BE INSTALLED AS MANUFACTURER'S INSTRUCTIONS.
2. ALL JOIST HANGERS SHALL BE INSTALLED TO RIM JOISTS AND JOISTS USING "JOIST HANGER NAILS" AS SPECIFIED BY THE MANUFACTURER. NO STANDARD NAILS OR SCREWS SHALL BE USED IN THE INSTALLATION OF THESE CONNECTORS/BRACKETS.
3. PROVIDE HURRICANE TIES AT ALL EXTERIOR TRUSS, JOIST OR RAFTER TO BEAM OR PLATE CONNECTIONS UNLESS SPECIFIED OTHERWISE.

1. ALL JOIST HANGERS, COLUMN/POST BRACKETS, ETC. AS NOTED ON DRAWINGS SHALL BE INSTALLED AS MANUFACTURER'S INSTRUCTIONS.
2. ALL JOIST HANGERS SHALL BE INSTALLED USING "JOIST HANGER NAILS" AS SPECIFIED BY THE MANUFACTURER. NO STANDARD NAILS OR SCREWS SHALL BE USED IN THE INSTALLATION OF THESE CONNECTORS/BRACKETS.
3. PROVIDE HURRICANE TIES AT ALL EXTERIOR TRUSS, JOIST OR RAFTER TO BEAM OR PLATE CONNECTIONS.

1. THE CONTRACTOR SHALL INCLUDE COSTS TO ENSURE THAT THE FOLLOWING QUALITY CONTROL ACTIVITIES ARE UNDERTAKEN DURING THE COURSE OF WORK:
 - 1.1. FIELD FRAMING INSPECTION ONCE TIMBER FRAMES HAVE BEEN INSTALLED.
2. THE CONTRACTOR SHALL BE RESPONSIBLE TO COORDINATE AND SCHEDULE ALL MATERIALS TESTING AND INSPECTION ACTIVITIES.


1. IT IS THE RESPONSIBILITY OF THE CONTRACTOR TO REMOVE ALL CONSTRUCTION DEBRIS FROM THE SITE ON A DAILY BASIS THROUGHOUT CONSTRUCTION. ALL DEBRIS AND WASTE TO BE DISPOSED OF IN A LEGAL LANDFILL SITE.
2. AT THE COMPLETION OF THE WORK, THE CONTRACTOR SHALL RESTORE THE INTERIOR OF THE ODR SLAB AND EXTERIOR CONDITIONS TO A PRE-CONSTRUCTION STATE (INCLUDING, BUT NOT LIMITED TO SITE CLEANUP, GRADING, RAKING, INTERIOR AND EXTERIOR SWEEPING, AND OR POWER WASHING).

1. LVL'S SHALL BE MICROLAM LVL TRUSS JOIST BY WEYERHAEUSER OR APPROVED EQUAL.
2. CRITICAL MEMBER; END BEAM OF GABLE END TRUSS SHALL BE D. FIR No. 1 OR BETTER. ALL OTHER FRAMING MEMBERS TO BE SPF No. 1 OR BETTER.
3. ALL POSTS AND GABLE TRUSS MEMBERS TO BE ROUGH SAWN LUMBER. ALL OTHER WOOD MEMBERS TO BE NOMINAL LUMBER.

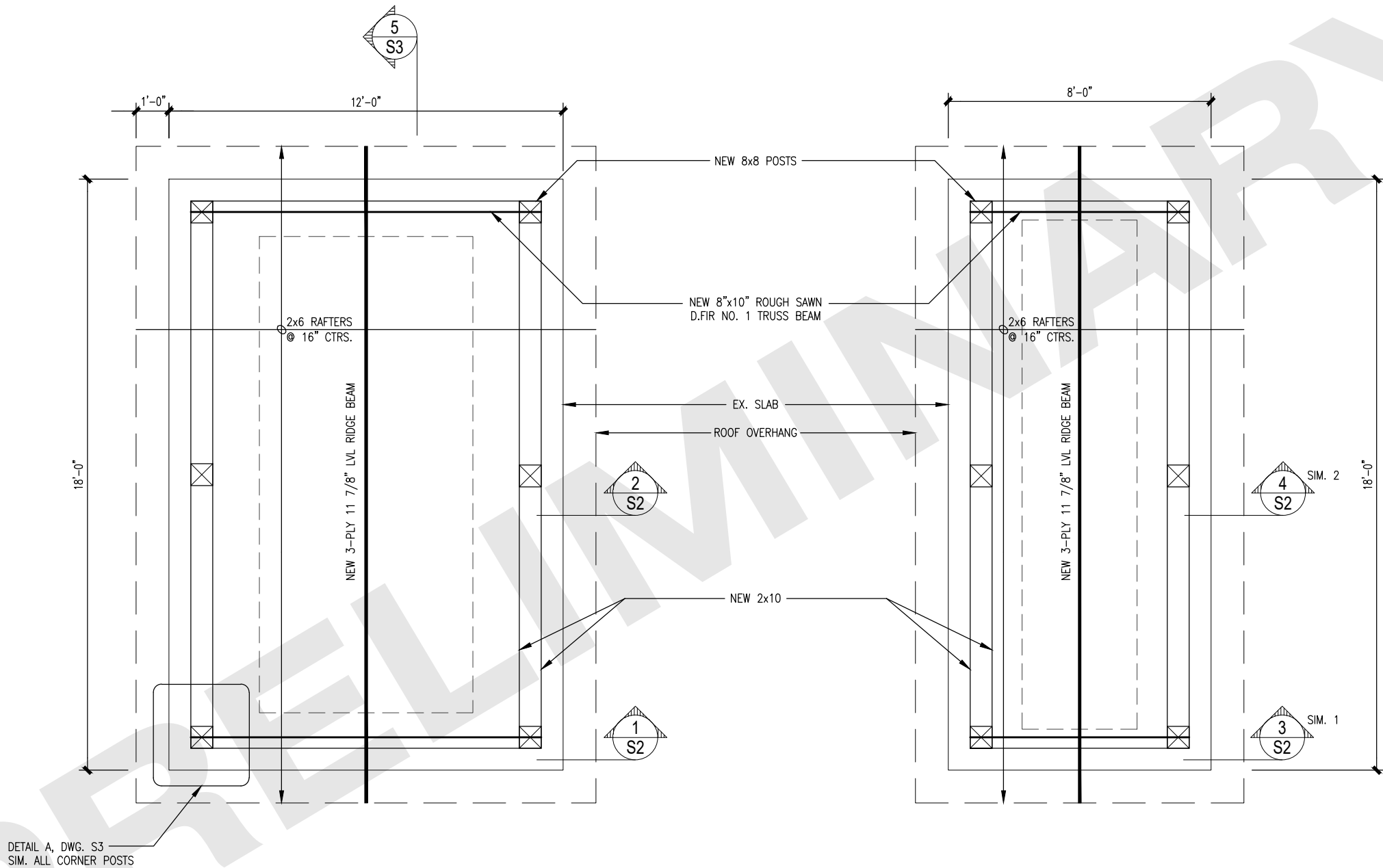


KEY PLAN
N.T.S.



<div><div><div><div><div>PROJECT:</div><div>TOWN OF BLIND RIVER PAVILION COVER STRUCTURES 182 VENTURI STREET, BLIND RIVER, ONTARIO</div></div></div><div><div>DRAWING:</div><div>GENERAL NOTES</div></div></div></div>										<table><tr><td colspan="2"></td><td colspan="2"></td><td colspan="2"></td><td colspan="2"></td><td colspan="2"></td><td colspan="2"></td></tr><tr><td colspan="2"></td><td colspan="2"></td><td colspan="2"></td><td colspan="2"></td><td colspan="2"></td><td colspan="2"></td></tr><tr><td colspan="2">0</td><td colspan="2">SEP. 12, 2025</td><td colspan="2">C.M.</td><td colspan="2"></td><td colspan="2">ISSUED FOR CONTRACTOR PRICING</td><td colspan="2"></td></tr><tr><td colspan="2">No.</td><td colspan="2">DATE</td><td colspan="2">BY</td><td colspan="2"></td><td colspan="2">ISSUES / REVISIONS</td><td colspan="2"></td></tr><tr><td colspan="4">DRAWN BY: C.M.</td><td colspan="4">CHECKED BY: M.K.</td><td colspan="4">PROJECT No. : 25-0622-105</td></tr><tr><td colspan="4">DESIGNED BY: M.K.</td><td colspan="4">APPROVED BY: M.K.</td><td colspan="2">DRAWING No.</td><td colspan="2">REVISION No.</td></tr><tr><td colspan="4">SCALE: As Noted</td><td colspan="4">DATE: JUL. 08, 2025</td><td colspan="2">G1</td><td colspan="2">0</td></tr><tr><td colspan="12">ENGINEER'S SEAL</td></tr></table>																																		0		SEP. 12, 2025		C.M.				ISSUED FOR CONTRACTOR PRICING				No.		DATE		BY				ISSUES / REVISIONS				DRAWN BY: C.M.				CHECKED BY: M.K.				PROJECT No. : 25-0622-105				DESIGNED BY: M.K.				APPROVED BY: M.K.				DRAWING No.		REVISION No.		SCALE: As Noted				DATE: JUL. 08, 2025				G1		0		ENGINEER'S SEAL											
0		SEP. 12, 2025		C.M.				ISSUED FOR CONTRACTOR PRICING																																																																																																											
No.		DATE		BY				ISSUES / REVISIONS																																																																																																											
DRAWN BY: C.M.				CHECKED BY: M.K.				PROJECT No. : 25-0622-105																																																																																																											
DESIGNED BY: M.K.				APPROVED BY: M.K.				DRAWING No.		REVISION No.																																																																																																									
SCALE: As Noted				DATE: JUL. 08, 2025				G1		0																																																																																																									
ENGINEER'S SEAL																																																																																																																			

P:\2025\250622 Town of Blind River - General Engineering Services\105\250622-105 2025-09-10 Blind River Pavilion.dwg



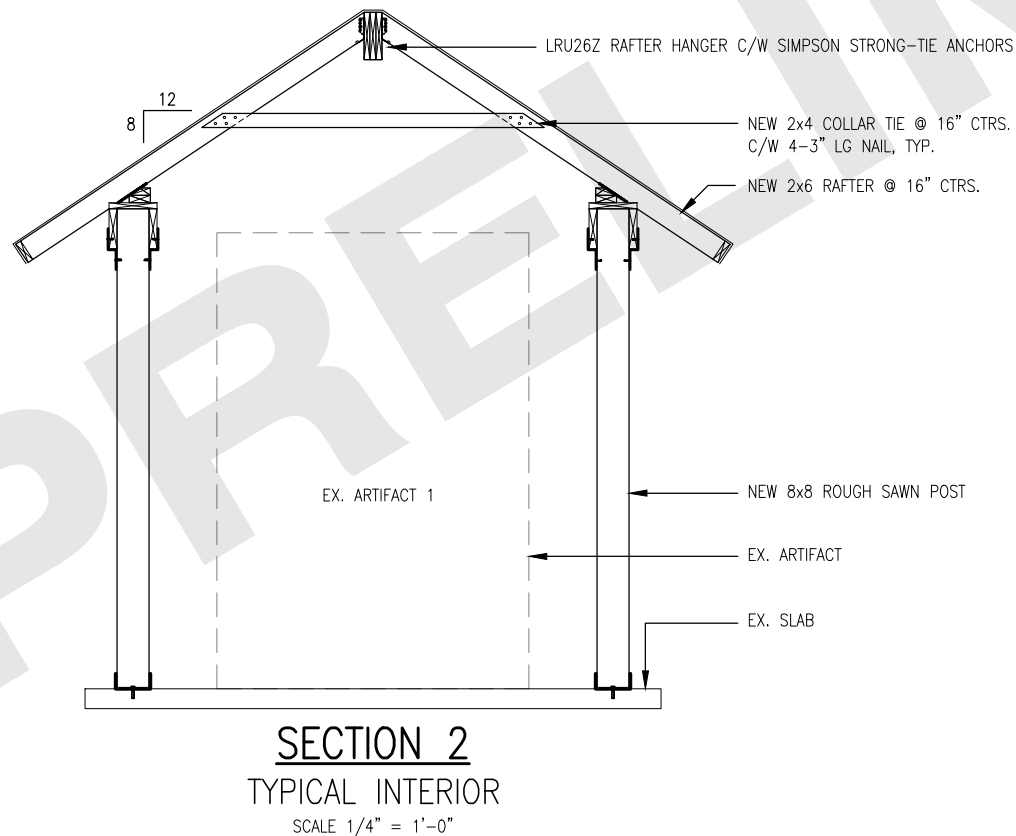
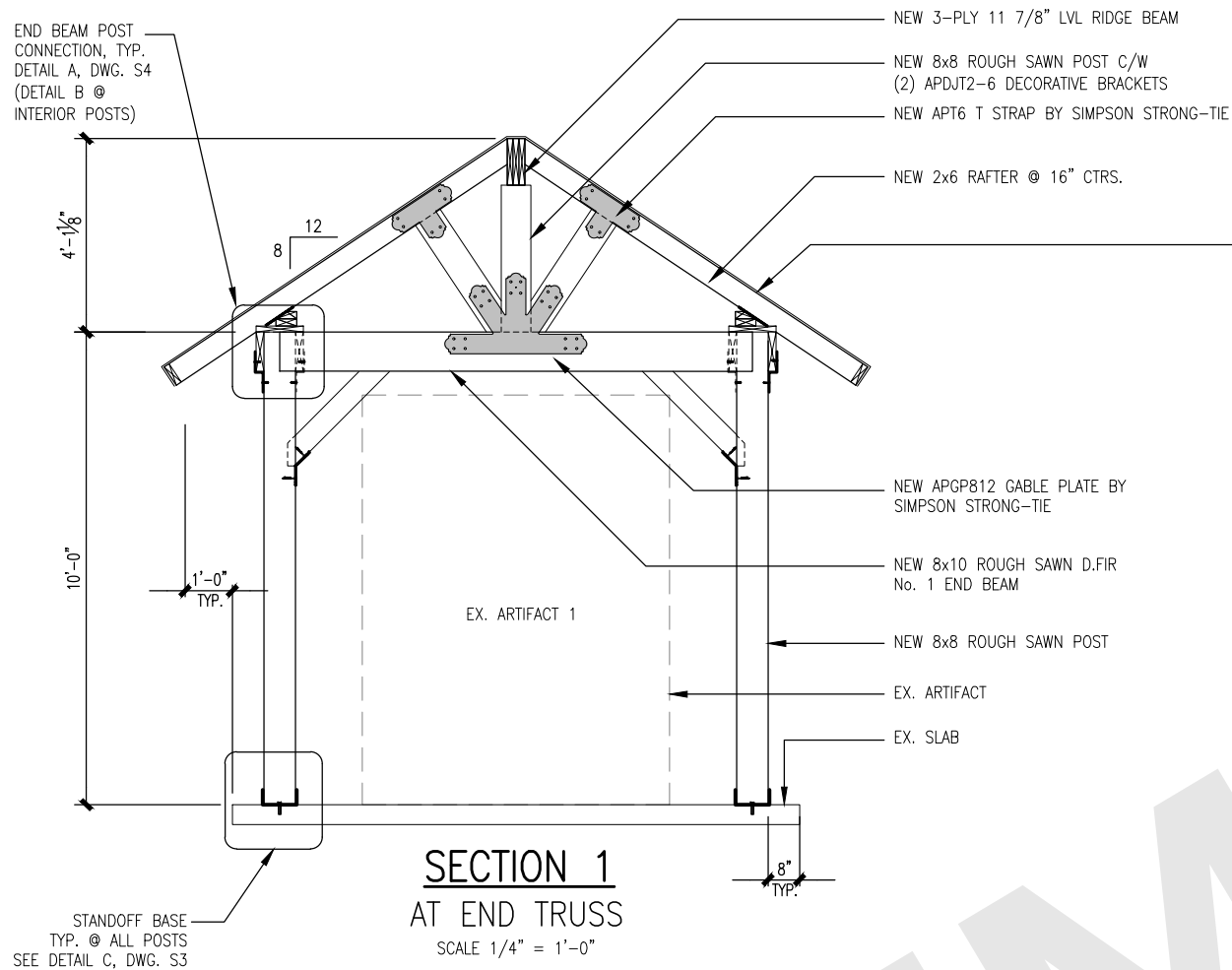
PLAN
ARTIFACT #1
SCALE 1/4" = 1'-0"

PLAN
ARTIFACT #3
SCALE 1/4" = 1'-0"



PROJECT: TOWN OF BLIND RIVER PAVILION COVER STRUCTURES 182 VENTURI STREET, BLIND RIVER, ONTARIO		DRAWING: PLANS		ENGINEER'S SEAL	
0	SEP. 12, 2025	C.M.	ISSUED FOR CONTRACTOR PRICING	PROJECT No.: 25-0622-105	
No.	DATE	BY	ISSUES / REVISIONS	DRAWING No.: S1	
DRAWN BY:		CHECKED BY:		REVISION No.:	
C.M.		M.K.		0	
DESIGNED BY:		APPROVED BY:			
M.K.		M.K.			
SCALE:		DATE:			
As Noted		JUL. 08, 2025			

P:\2025\250622 Town of Blind River - General Engineering Services\105\250622-105 2025-09-10 Blind River Pavilion.dwg

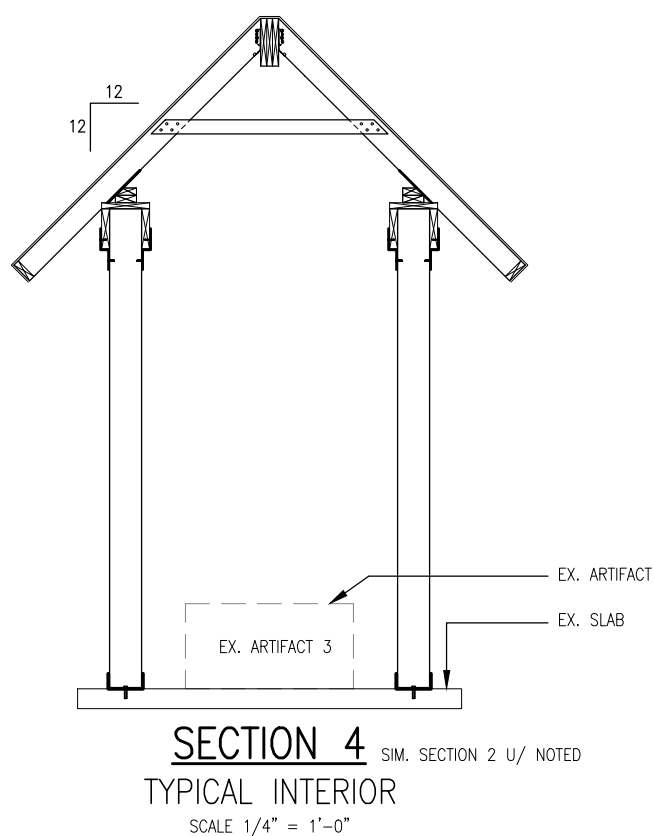
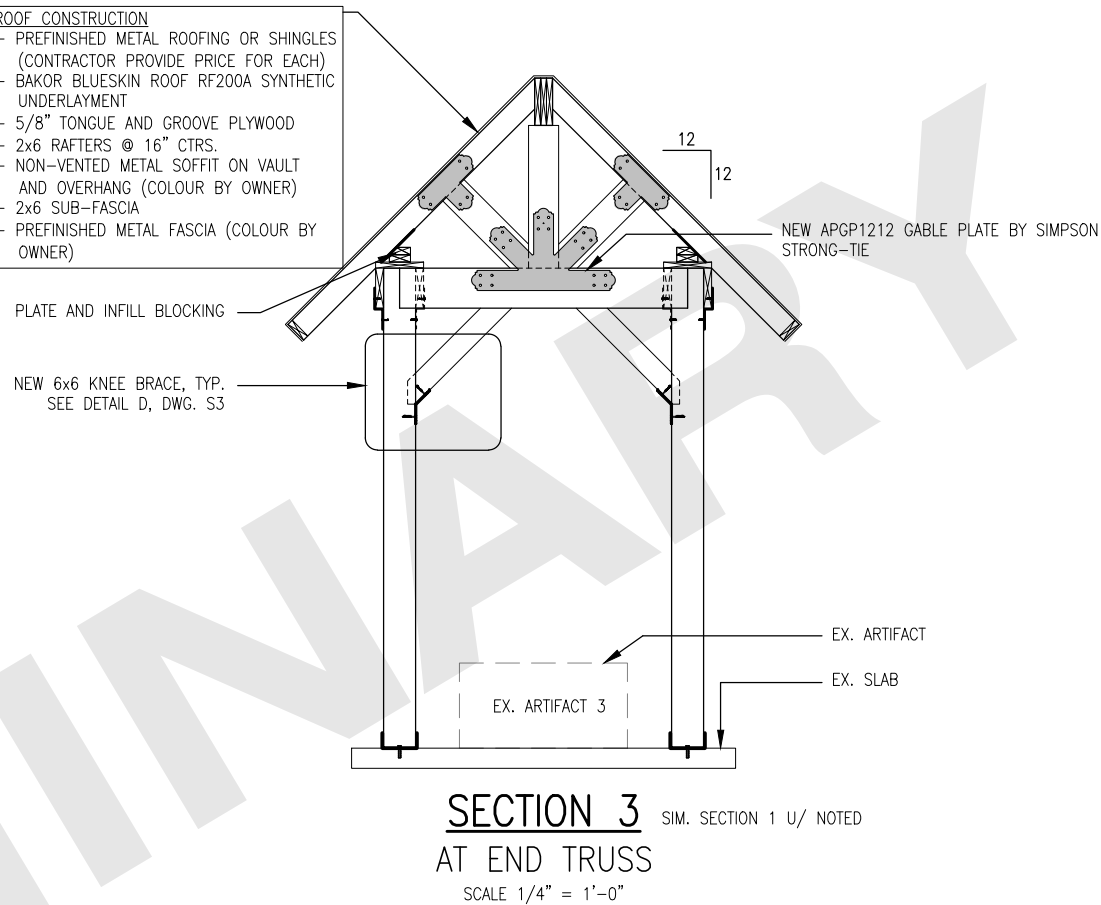


ROOF CONSTRUCTION

- PREFINISHED METAL ROOFING OR SHINGLES (CONTRACTOR PROVIDE PRICE FOR EACH)
- BAKOR BLUESKIN ROOF RF200A SYNTHETIC UNDERLAYMENT
- 5/8" TONGUE AND GROOVE PLYWOOD
- 2x6 RAFTERS @ 16" CTRS.
- NON-VENTED METAL SOFFIT ON VAULT AND OVERHANG (COLOUR BY OWNER)
- 2x6 SUB-FASCIA
- PREFINISHED METAL FASCIA (COLOUR BY OWNER)

PLATE AND INFILL BLOCKING

NEW 6x6 KNEE BRACE, TYP. SEE DETAIL D, DWG. S3



PROJECT:

**TOWN OF BLIND RIVER
PAVILION COVER STRUCTURES
182 VENTURI STREET, BLIND RIVER, ONTARIO**

DRAWING:

SECTIONS



ISSUED FOR CONTRACTOR PRICING

C.M.

SEP. 12, 2025

0

ISSUES / REVISIONS

BY

DATE

No.

CHECKED BY:

M.K.

C.M.

DESIGNED BY:

M.K.

M.K.

SCALE:

As Noted

PROJECT No.:

25-0622-105

DRAWING No.

REVISION No.

APPROVED BY:

M.K.

M.K.

DATE:

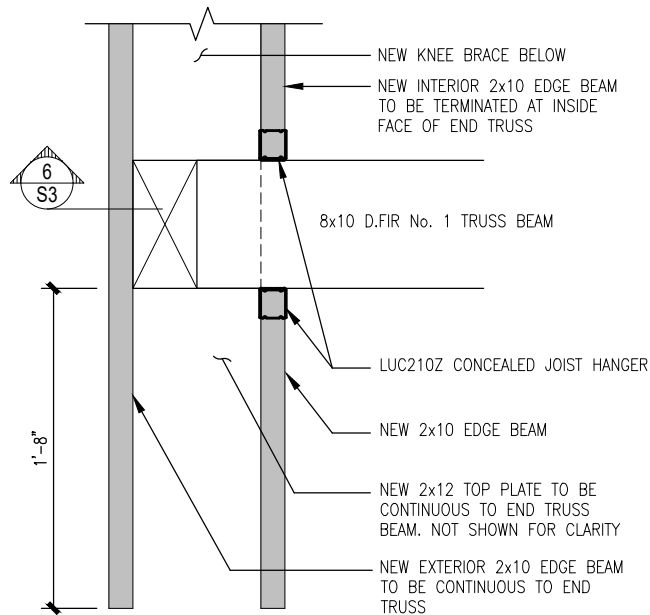
JUL. 08, 2025

ENGINEER'S SEAL

S2

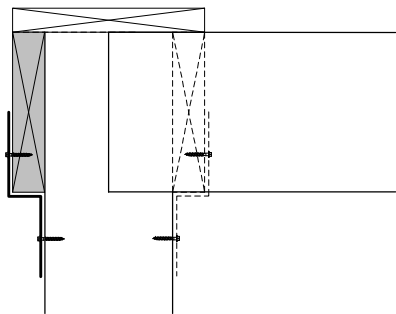
0

P:\2025\250622 Town of Blind River - General Engineering Services\105\250622-105 2025-09-10 Blind River Pavilion.dwg



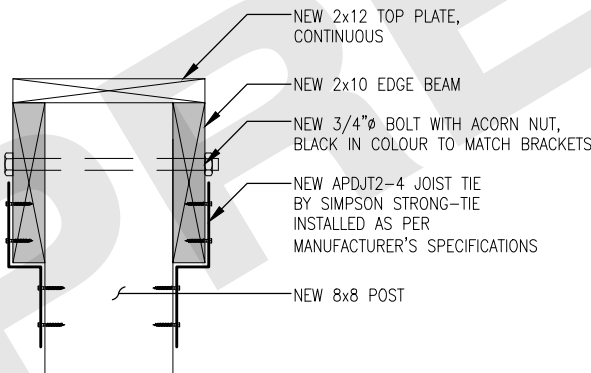
PARTIAL PLAN – DETAIL A
CONNECTION @ END BEAM POSTS

SCALE: 1 1/2" = 1'-0"



SECTION 6 – DETAIL A
CONNECTION @ END BEAM POSTS

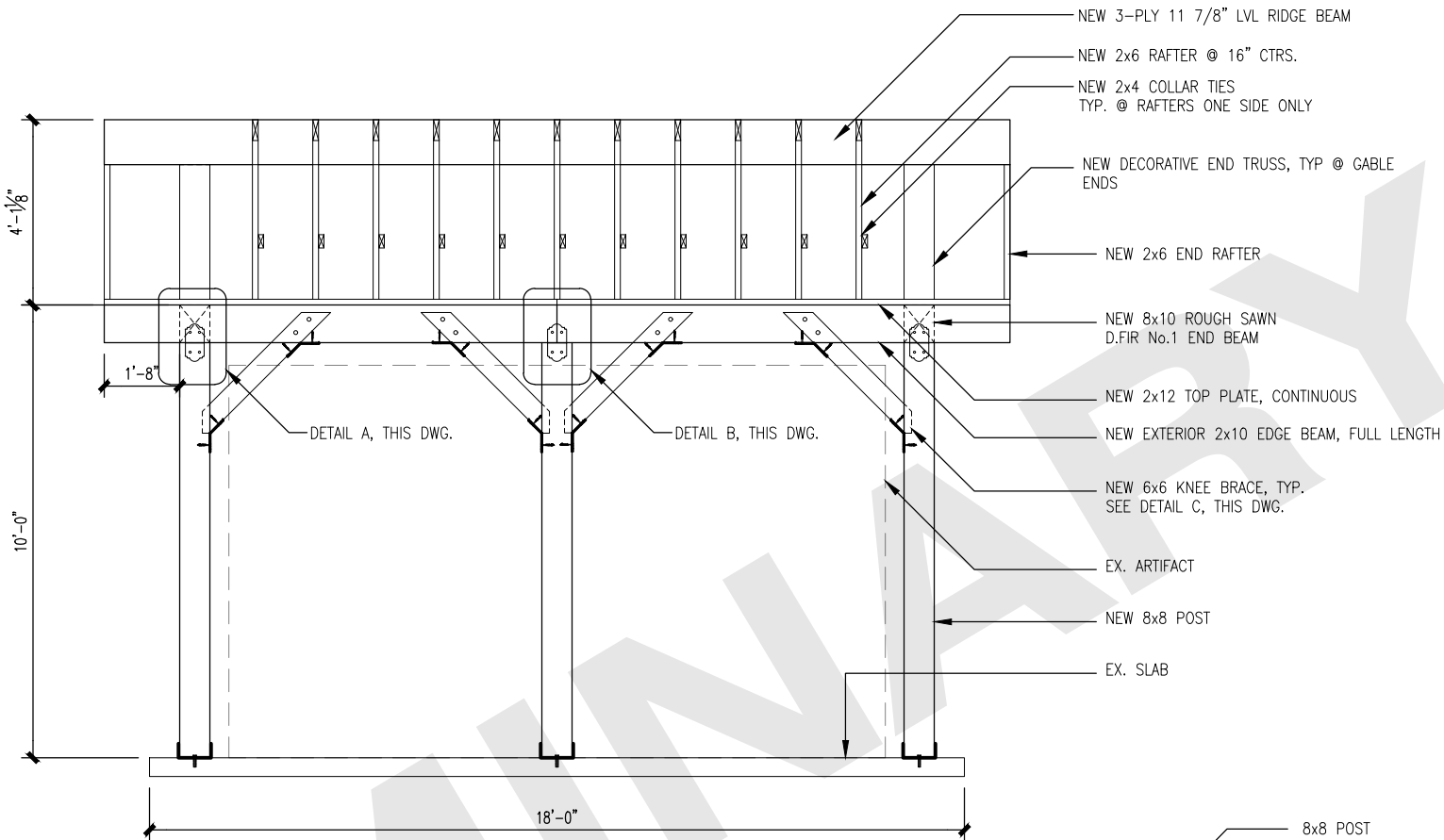
SCALE: 1 1/2" = 1'-0"



DETAIL B

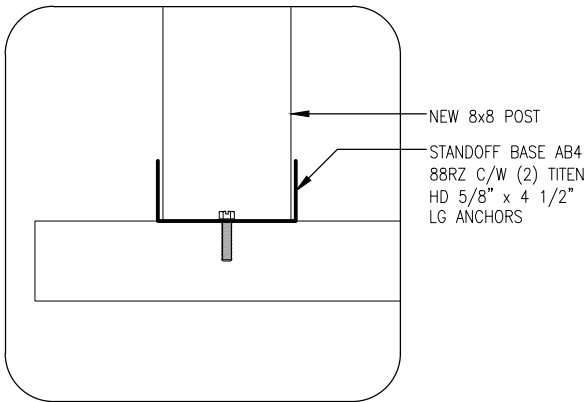
TYPICAL CONNECTION
@ INTERIOR POSTS

SCALE: 1 1/2" = 1'-0"



SECTION 5 TYP. @ BOTH ARTIFACTS
AT END TRUSS

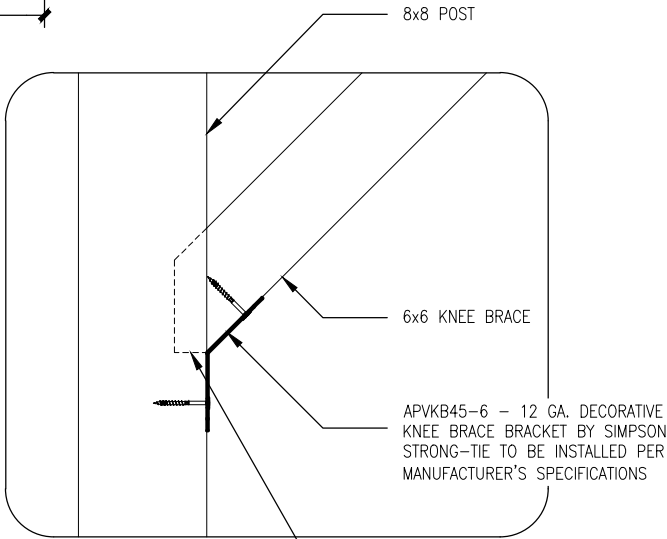
SCALE 1/4" = 1'-0"



DETAIL C

POST BASE CONNECTION

SCALE: 1 1/2" = 1'-0"



DETAIL D

TYPICAL KNEE BRACE

SCALE: 1" = 1'-0"



PROJECT:				TOWN OF BLIND RIVER PAVILION COVER STRUCTURES 182 VENTURI STREET, BLIND RIVER, ONTARIO			
DRAWING:				SECTIONS AND DETAILS			
PROJECT No.:				25-0622-105			
CHECKED BY:				M.K.			
DESIGNED BY:				M.K.			
APPROVED BY:				M.K.			
SCALE:				As Noted			
DATE:				JUL. 08, 2025			
DRAWING No.:				S3			
REVISION No.:				0			
ISSUED FOR CONTRACTOR PRICING				ISSUES / REVISIONS			
C.M.				BY			
0				SEP. 12, 2025			
No.				DATE			